

Super Commands

by Ralph Grabowski

Introduction

Autodesk adds commands and system variables to each release of AutoCAD, and now there are over a thousand. Sometimes commands with different names have similar functions, and so Autodesk has begun combining similar ones into “super” commands. For example, the new **Attach** command combines the following commands

- **XAttach** attaches DWG file as external references
- **ImageAttach** attaches raster images
- **DwfAttach** attaches DWF and DWFx files
- **PdfAttach** attaches PDF files (new to AutoCAD 2010)
- **DgnAttach** attaches DGN files.

One command replaces five, and is much easier to remember. Other super commands in AutoCAD 2010 include Adjust, Clip, MeasureGeom, and ULayers, while new super system variables include Frame and UOsnap. Older super commands include Export and ExternalReferences. I suspect that Autodesk will combine other commands in future releases, such as for 3D editing and plotting-publishing.

While a single command name (**Attach**) replaces five separate commands, the command operates slightly differently, depending on the type of file being attached. In this tutorial, you learn how this command works.

Tutorial: Attaching Files to Drawings

1. Start AutoCAD 2010 with a new drawing.
2. Start the **Attach** command in one of these ways:
 - At the command prompt, enter **Attach**, or...
 - Click the ribbon's **Insert** tab, and then choose **Attach** in the **Reference** panel.

TIP The **-Attach** command prompts you at the command line, instead of in dialog boxes. It is meant to be used with scripts and LISP routines.

3. Notice the Select Reference File dialog box.

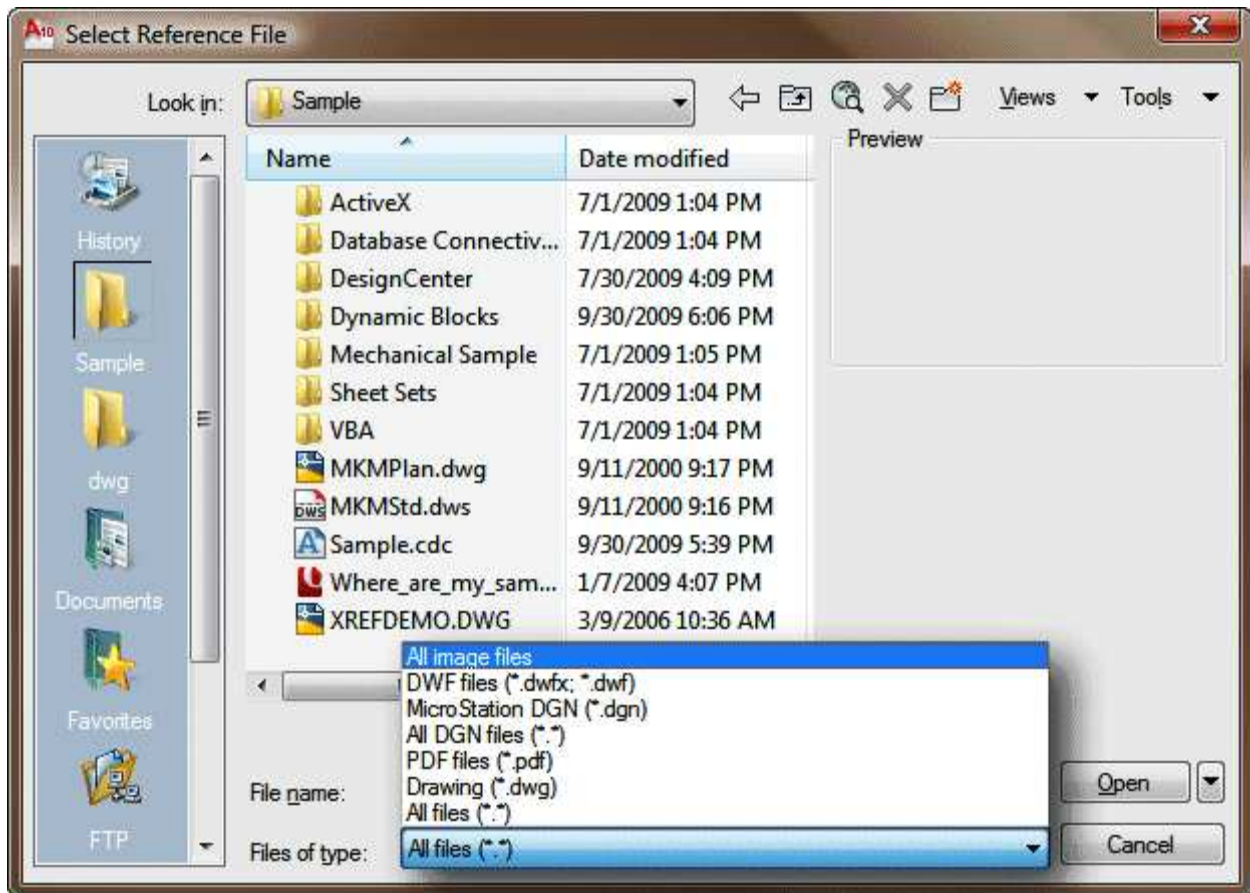


Figure 1: The Select Reference File dialog box.

4. Click the **Files of Type** droplist. Notice the different kinds of files it supports:

File Format	File Extension	Notes
Adobe PDF	.pdf	Single and multi-page
Drawing	.dwg	Does not support DXF files
DWF	.dwf	Single and multi-page
DWFX	.dwfx	Single and multi-page
Image	(*)	*) All raster formats supported by the Image command
MicroStation	.dgn	Version 7 and 8 only
All Files	(*)	*) Format supported by Attach command only

The "All Files" type is a bit misleading, since Attach will not open many file formats, such as .dws, .dxf, .doc, .xls, and so on. When you open an unsupported file, AutoCAD issues the complaint shown in the figure below.

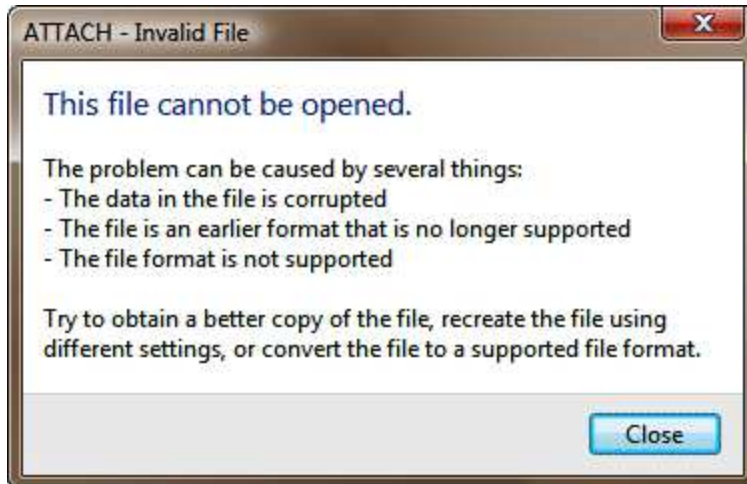


Figure 2: The Invalid File dialog box.

5. Select a sample file, such as *Civil Sample Sheet Set.dwf* found in AutoCAD 2010's *lsample\sheet sets\civil* folder.
6. Click **Open**. Notice the Attach DWF Underlay dialog box. (If you opened another file type, this dialog box would look similar, but not identical.)

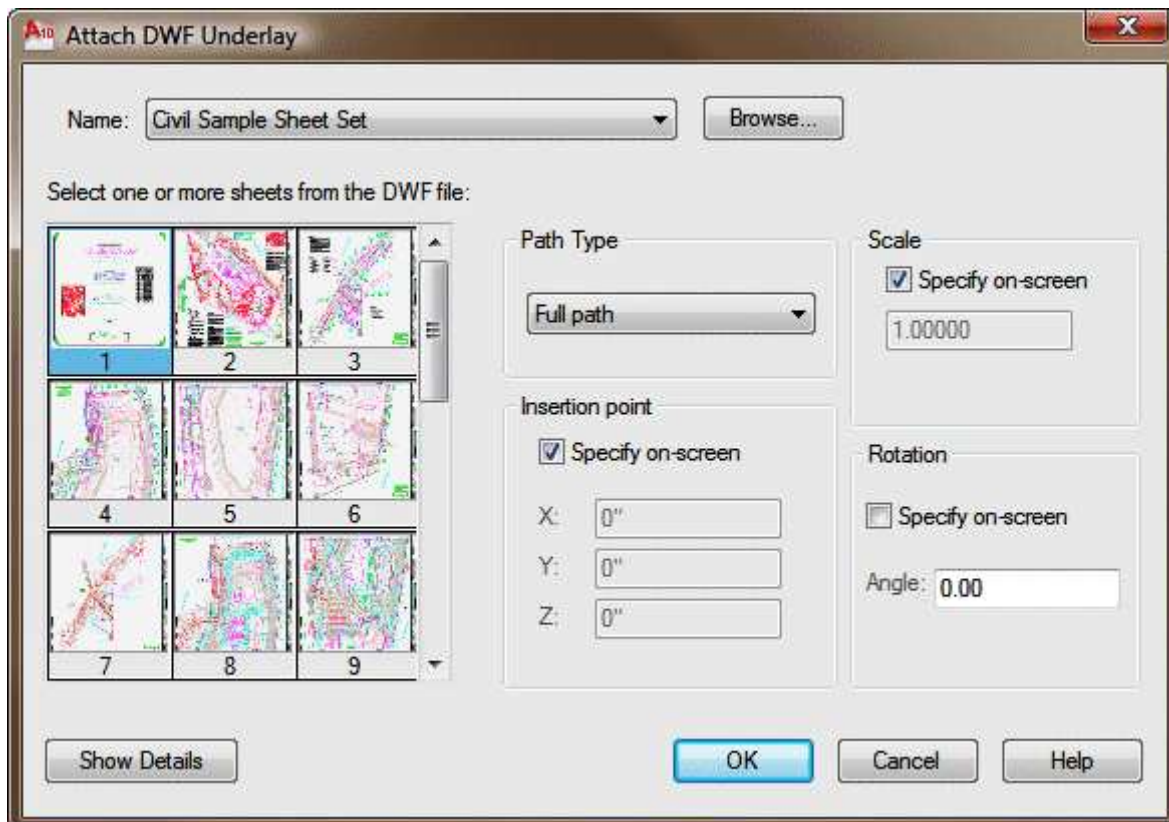


Figure 3: The Attach DWF Underlay dialog box.

7. The purpose of this dialog box is two-fold: (1) specifies where to locate the DWF file in the drawing; and (2) which pages to place of a multi-page DWF file. For this tutorial, choose the following options:

Select one or more sheets from the DWF file: *(Hold down the Shift key, and then pick pages 1 and 2.)*
Path type Full path
Scale 1 *(Turn off Specify on-screen option)*
Insertion point 0,0,0 *(Turn off Specify on-screen option)*
Rotation 0

TIP To choose all pages of a multi-page DWF or PDF file quickly, press **Ctrl+A** in this dialog box.

8. Click **OK**. Notice that the two "pages" are placed in the drawing. (If necessary, use the Zoom Extents command to see the entire drawing.)

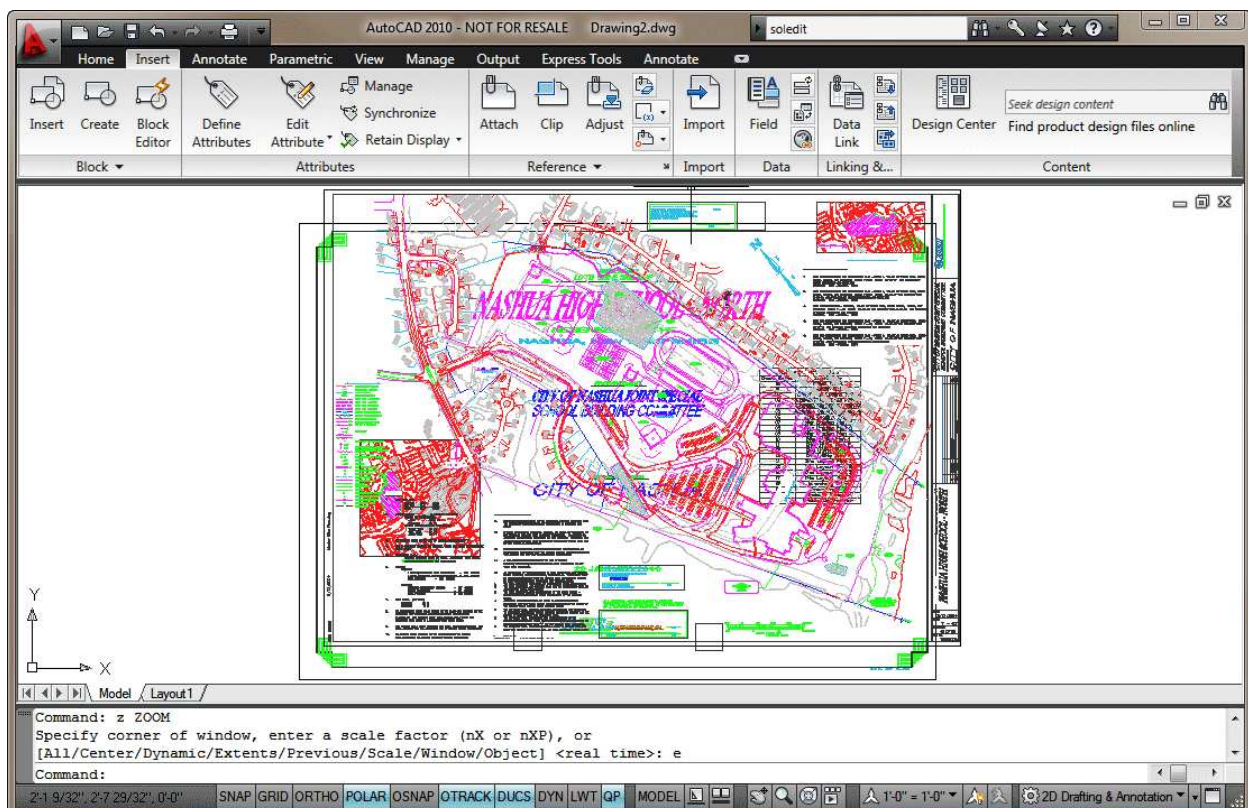


Figure 4: DWF files attached to drawing.

9. Save this drawing as "DWF Tutorial.dwg" for the next tutorial.

In the next tutorial, you use some of the new "super" commands on the attached DWF files.

Test Yourself

1. Which of the following file formats does the Attach command NOT attach?

- a. DWG
 - b. DWF
 - c. DOC
 - d. PDF
2. Which one of the following parameters CAN be set in the Attach DWF Underlay dialog box?
- a. Scale
 - b. Layers
 - c. Osnaps
 - d. Fade level
3. When **Files of Type** is set to "All Files," the Attach command will attach all types of files: True/False.
4. You can choose which pages of a multi-page PDF file the Attach command will attach. True/False
5. Which command is meant for attaching files through scripts or LISP routines?
- a. Attach
 - b. Attached
 - c. -Attach
 - d. -DwfAttach

Answers:

- 1. *c. DOC*
- 2. *a. Scale*
- 3. *False*
- 4. *True*
- 5. *c. -Attach*